



OPT SHR IPL

Skin & hair treatments.

A must for patient to enjoy perfect skin without pain.

Big spot size with 20HZ fast speed.

PZLASER[®]

www.pzlaser.com



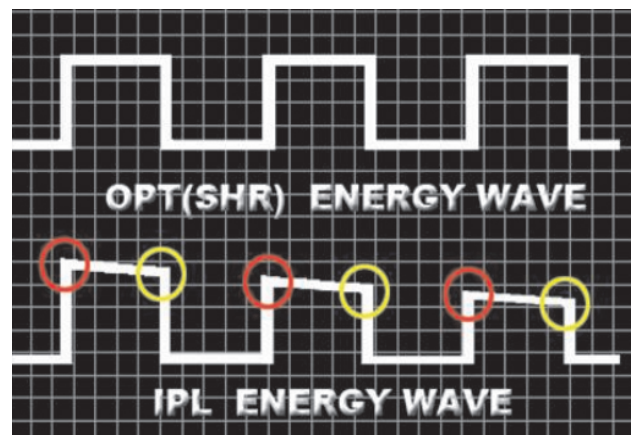
What is SHR?

It adopts OPT (Optimal pulse Technology) technology, which emits constant energy to realize optimum clinical results. The use of three-dimensional technology concepts: energy+ pulse width+ pulse waveform. Due to changes the pattern of treatment light output, intense pulsed light is revolutionary in the development, not only great efficacy improved but also more safety. With Wide application of Hair removal, Skin rejuvenation, Acne Clearance, Vascular treatment, pigmentation treatment .

How SHR IPL differ from traditional IPL ?

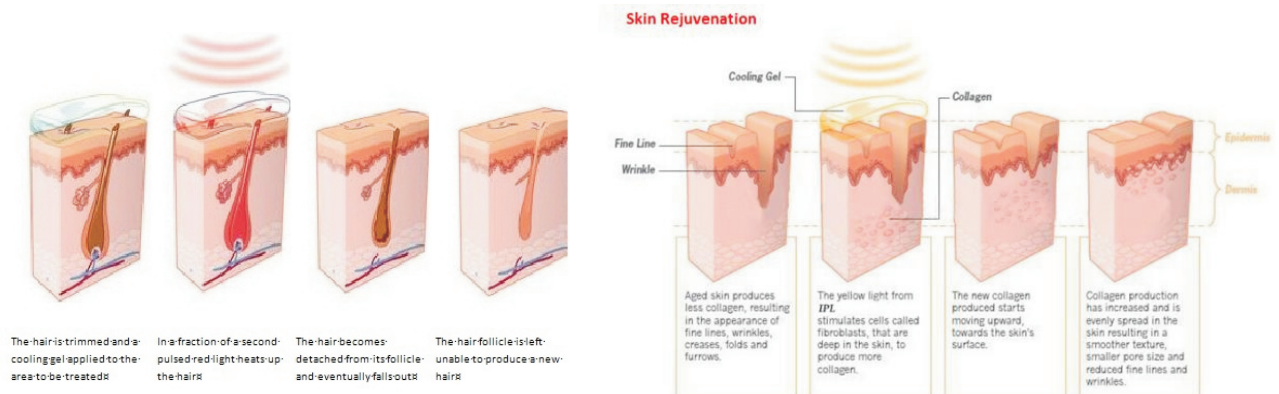
With less pain and without comprising efficiency & high average power is the most difference between OPT technology with traditional IPL.

OPT SHR make comfort as the first priority as well as delivering maximum treatment efficiency. Comparing with our OPT SHR, normal IPL system is unfeasible to produce long square pulse which should reach the relaxation period to target skin. Moreover fluctuations of output energy will easily lead to ineffective treatment result and increase risk of side effect.



How does it work?

Our OPT SHR Procedure



Hair removal

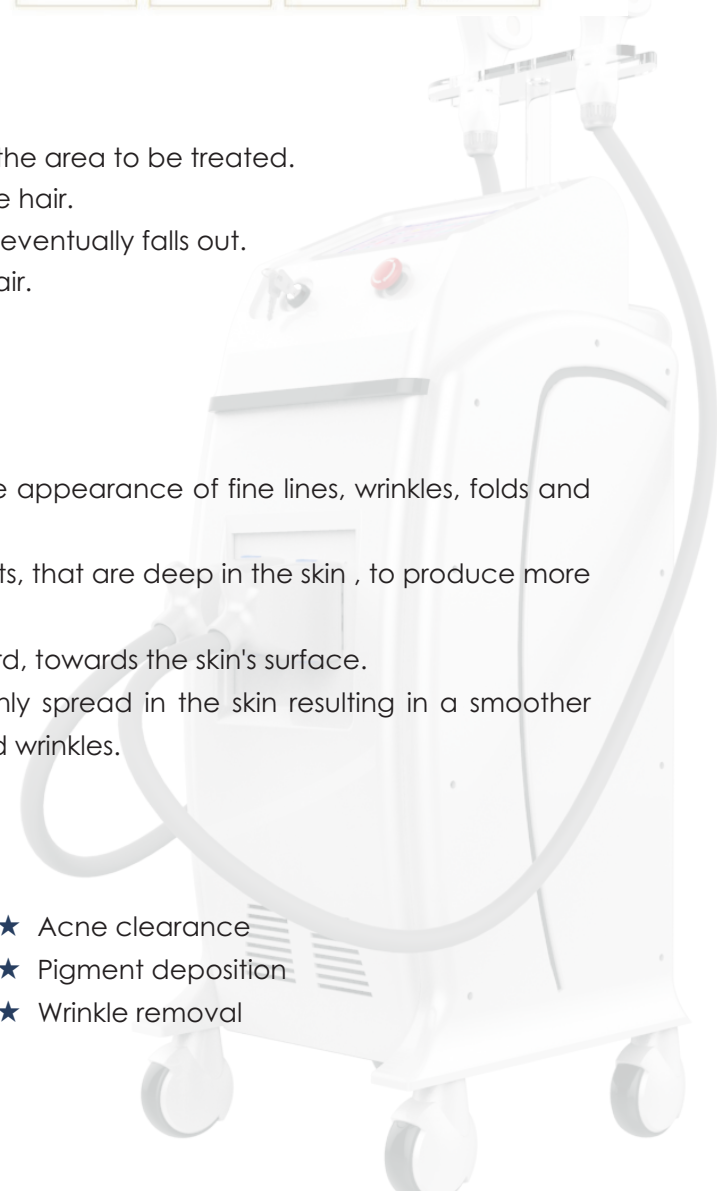
1. The hair is trimmed and a cooling gel applied to the area to be treated.
2. In a fraction of a second pulsed light heats up the hair.
3. The hair becomes detached from its follicle and eventually falls out.
4. The hair follicle is left unable to produce a new hair.

Skin problems

1. Aged skin produces less collagen, resulting in the appearance of fine lines, wrinkles, folds and furrows.
2. The light from SHR stimulates cells called fibroblasts, that are deep in the skin, to produce more collagen.
3. The new collagen produced starts moving upward, towards the skin's surface.
4. Collagen production has increased and is evenly spread in the skin resulting in a smoother texture, smaller pore size and reduced fine lines and wrinkles.

Indications

- ★ Permanent hair removal
- ★ skin rejuvenation
- ★ Vascular treatment
- ★ Acne clearance
- ★ Pigment deposition
- ★ Wrinkle removal



Why Choose PZ LASER SHR?

Our SHR machine used by physicians around the world, it is the machine that enables you to treat more types of patients and conditions with better outcomes.

- ✓ Large spot size with fast frequency up to 20HZ

The spot size is 15*50mm, which is effective to reduce irradiate time. The maximum frequency is 20 HZ, which is able to cost less times and obtain an instant effect.

The large spot size and 20HZ frequency increases treatment speed by up to 3.5 times. Treat a face in 15 minutes, remove hair on legs in 30 minutes.

Our innovative 20Hz frequency design could ensure very effective face tightening. Our clients could use the machine for full body whitening and skin rejuvenation effectively.

- ✓ Maximize patient comfort via efficient continuous contact cooling

Advanced Cooling Technology cools the skin during treatment for longer periods of time, minimizing the risk of burns while maintaining heat within the dermis where hair follicles are treated. The result is a cutting-edge hair removal solution that delivers superior results for all skin types- including dark skin.



You can expect painless hair-free and more younger skin from our machine.



✔ User-friendly software design

Professional mode for experts and intelligent mode with pre-set parameters for beginners. Skin type, hair density, hair color, hair thickness for options.

✔ Dual wavelength-limited

Drs prefer and seek more Dual Wavelength SHR

First handle: 640-950nm, for hair removal, comparing than 610-1200nm.

Second handle: 530-950nm, for skin rejuvenation and pigmentation removal

✔ With 6pcs Japan Capacitors(10000uf each), charge the machine quickly .

✔ Square-Wave power source 3000W, provides uniform & abundant energy .

✔ NCRIEO pulse xenon lamp with all Germany material, at least 500,000 flashes.

Before and After Results



Before



After



Before



After



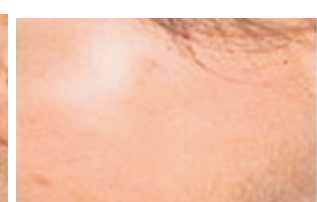
Before



After



Before



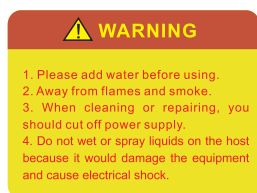
After

SPECIFICATION

OPT SHR E-light Parameters	
Treatment handles	HR handle SR handle
Wave length	SR 530nm-950 HR 640nm-950nm
Spot size	15mm*50mm
Fuse	10A
Control System	8" TFT full color touch screen
Repetition Frequency	SHR mode: 20HZ IPL mode: 1HZ, 2HZ, 3HZ, 4HZ, 5HZ
Energy density	1—60J/cm ²
Cooling system	Water +Semi Conductor +Air +Sapphire Tip
Working modes	Intelligent Mode & Expert Mode
Working Temperature	+15°C~+30°C
Storage temperature	-20°C~+55°C
Relative humidity	≤80%
Net Weight	56
Package Dimensions	117*56*50cm
Voltage	220V/50Hz 110V/50Hz

About PZ Laser Company

PZ Laser a worldwide aesthetic device manufacturer produces high-end products for plastic surgeons, dermatologist, physicians and healthcare professionals. PZ Laser serves the industry as one of the leading companies with rigorous R&D level and valuable experience with 15 years histories. PZ Laser products are being globally marketed by overseas offices and worldwide distributors partners.



Tel: 0086 - 371 - 55677868
0086 - 371 - 55677886
0086 - 371 - 55011989

Fax: 0086 - 371 - 55677886
E-mail: info@pzlaser.com

Headquarters:

Room 20, FL 4th, Unit 2, Building 13, Electronic Industrial Park, Lianhua Road, Hi-tech Development Zone, Zhengzhou, Henan, China

For more information: www.pzlaser.com